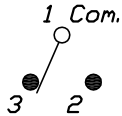


RECOMMENDED P.C.B. LAYOUT
NOT TO SCALE



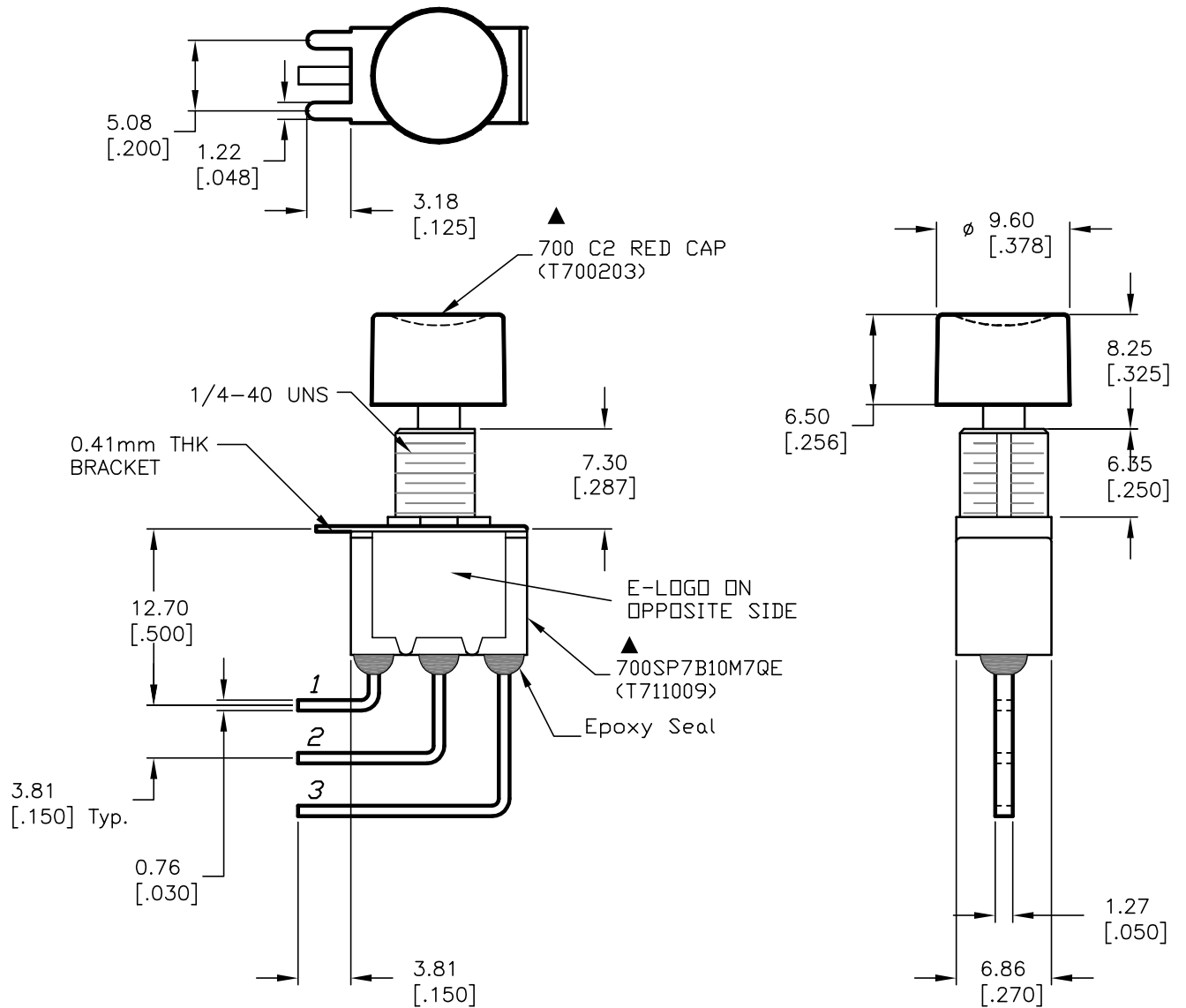
CIRCUIT: SPDT

SWITCH FUNCTION	
ON	<ON>
1-3	1-2

< > =MOMENTARY

NOTES:

1. ALL DIMENSIONS IN MM [INCH]
2. GENERAL TOLERANCE: X.X=±0.4
X.XX=±0.25
3. TERM. NOS. FOR REF. ONLY
4. RATING: 1A @ 250VAC; 3A @ 125VAC
- ▲ 5. FIXED TERM. & MOVING CONTACT:
Copper Alloy w/Silver Plate
6. CONTACT RESISTANCE: 10mILLI-ohms initial
@2-4VDC
7. ELECTRICAL LIFE: 50,000 make-and-break
cycles at full load.
8. INSULATION RESISTANCE: 1,000M ohm min.
9. DIELECTRIC STRENGTH: 1000V RMS @sea level
10. OPERATING TEMP.: -30°C to 85°C
11. ▲ DENOTES CRITICAL PARAMETER.



E-SWITCH®

TITLE					700SP7B10M7QEC2RED				
SCALE	DATE	DR	DWG	REV					
2:1	3/29/04	AR	XT0075P	A					

A	13884	RELEASED FOR PRODUCTION	3/29/04	AR
REV.	ECN No.	DESCRIPTION	DATE	CHKD

THE INFORMATION CONTAINED IN THIS DOCUMENT
IS PROPRIETARY TO E-SWITCH AND IS
NOT TO BE COPIED OR TRANSFERRED